



MITEQ, INC.
 100 Davids Drive
 Hauppauge, New York 11788-2086
 Tel. : (631) 436-7400
 FAX : (631) 436-7430

Project : MQO 151614

Internal Transfer : _____

Customer P / N : _____

Customer P. O. : D0741228120056

Model Number : AMF-5B-06700690-40-37P

Serial Number : 1256646

SPECIFICATIONS at +25°C :

Frequency (GHz)	<u>6.7 - 6.9 GHz</u>	P _{out} @ 1 dB Comp (dBm)	<u>+37.0 dBm min.</u>
Gain (dB)	<u>35.0 dB min.</u>	Output IP3 (dBm)	<u>/</u>
Gain Flatness (dB)	<u>±0.5 dB max.</u>	Reverse Isolation (dB)	<u>/</u>
Δ Gain vs. Temp (dB)	<u>/</u>	Voltage (VDC)	<u>+15V</u>
VSWR : Input / Output	<u>2:1 / 1.5:1 max.</u>	Current (mA)	<u>2200 mA max.</u>
Noise Figure (dB)	<u>4.0 dB max.</u>	Operating Temp (°C)	<u>0° to +60°C</u>
		Outline Drawing	<u>11251</u>

NOTE 1 - This unit can safely handle a maximum input power of +8 dBm, CW.

NOTE 2 - Adequate heat sinking is required to guarantee proper amplifier operation.

Measured Current
 I_{lim.} 2450 mA
 I(CA) 2610 mA

TEST DATA at +25°C :

Frequency (GHz)	Noise Figure (dB)	P _{out} @ 1 dB Comp (dBm)	Output IP3 (dBm)	Frequency (GHz)	Noise Figure (dB)	P _{out} @ 1 dB Comp (dBm)	Output IP3 (dBm)
<u>6.7</u>	<u>3.1</u>	<u>+37.4</u>					
<u>6.8</u>	<u>3.1</u>	<u>+37.6</u>					
<u>6.9</u>	<u>3.1</u>	<u>+37.5</u>					

Max VSWR Input	Max VSWR Output
<u>1.42:1</u>	<u>1.2:1</u>

With 2 Output Signals
 Each At _____ dBm.
 The 3rd Order IM Rejection
 is = _____ dB.

Tested By : H. Becker

Date : 1/27/07



Project PRD 151614

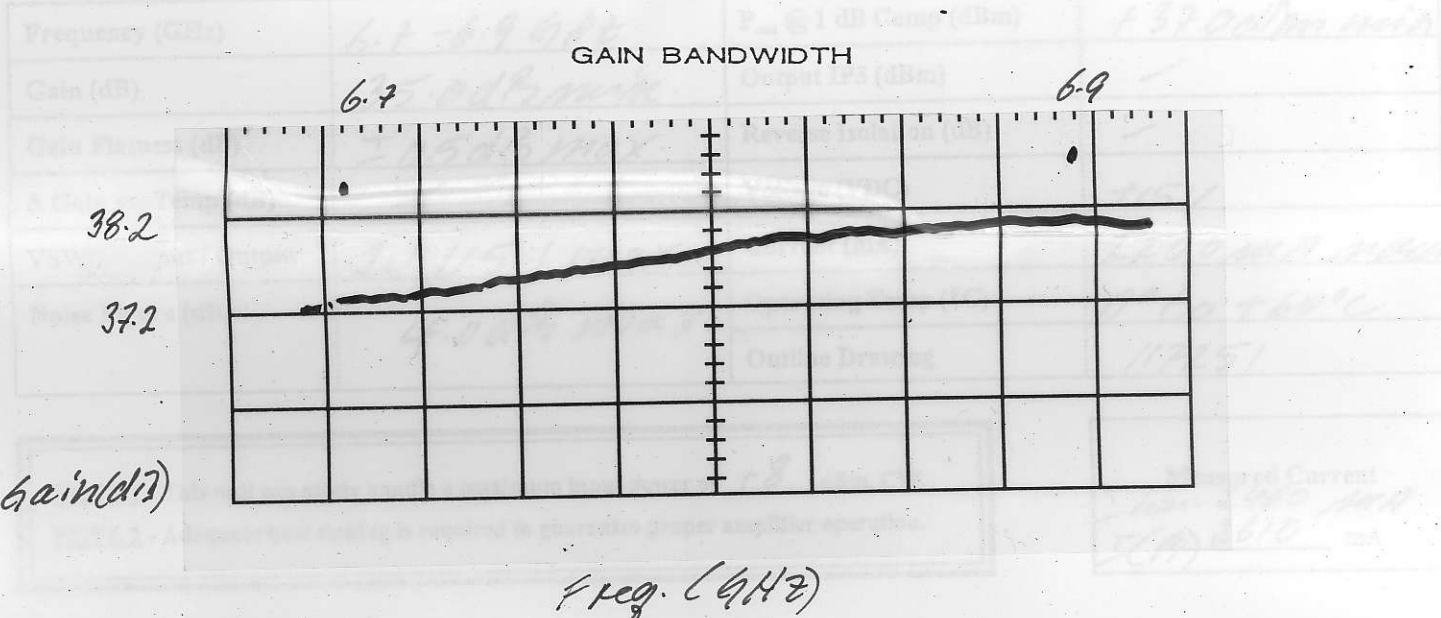
Internal Transfer _____

Customer P/N _____

Model AMF-4B-06700690-40-37A

Serial No. 1256646

SPECIFICATIONS @ +25°C



TEST DATA @ +25°C

Frequency (GHz)	Gain Figure (dB)	F _{1dB} Comp (dBm)	Output IP3 (dBm)	Frequency (GHz)	Gain Figure (dB)	F _{1dB} Comp (dBm)	Output IP3 (dBm)
6.7	37.1	+314					
6.8	37.1	+326					
6.9	37.1	+325					

Tested By H. Becker Date 1/27/07